

8K ROI (Region of Interest) Camera Capable of
Providing Four Independent HD Videos from an 8K Image



AK-SHU800
Image Processing Unit

AK-SHU800EJ: LC connector model
AK-SHU800PSJ: ST connector model

AK-SHB800
8K Multi Purpose Camera

AK-SHB800GJ: LC connector model
AK-SHB800PSJ: ST connector model

Worldwide
Olympic Partner

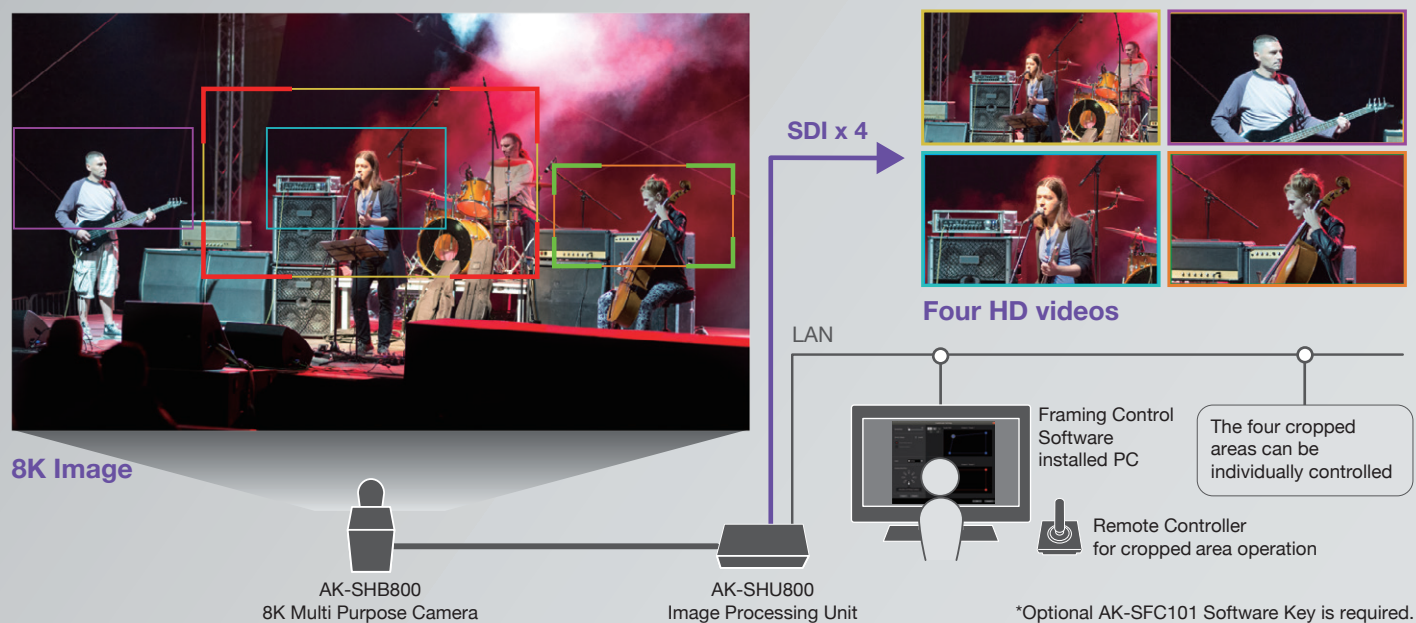


Worldwide
Paralympic Partner



8K
HDR

Single 8K Multi-Purpose Camera Serves as Four HD Camera Frames to Improve Operating Efficiency and Reduce Operating Costs in Live Events and Sports Applications



▲ Application example of the 8K ROI camera system (live stage recording with a camera)

The 8K Multi Purpose Camera is set up in a fixed position. The four cropped areas can be individually controlled for pan, tilt and zoom. Moreover, for example, long shot and close-up can be linked in operation.

Four HD Videos Can Be Cropped from within An 8K Image

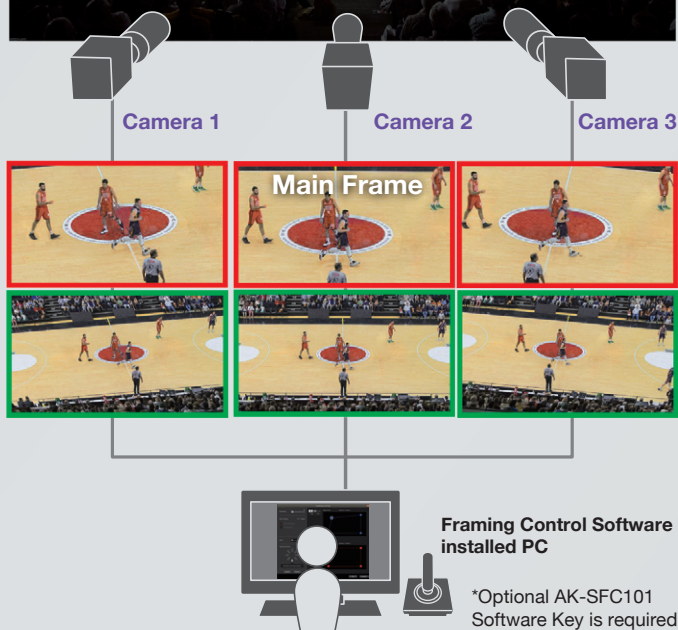
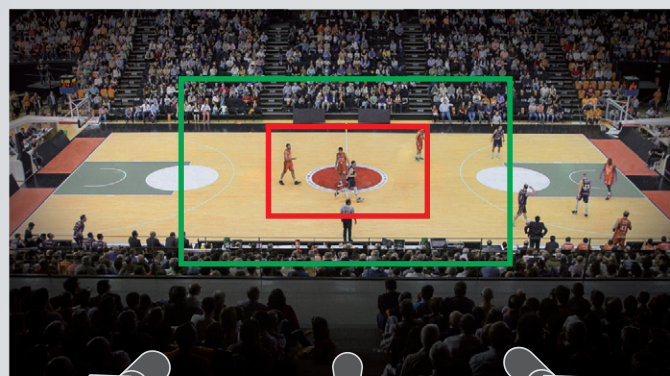
ROI stands for Region of Interest. An 8K ROI camera can be set with a maximum of four cropped areas to obtain an HD image from each of the cropped areas. Pan, tilt and zoom operations can be used on each cropped area, so a single 8K ROI camera serves as four HD camera frames. It improves acquisition efficiency in live and sports application. Tally indicators (see above) can be attached to the cropped frame, allowing operation similar to conventional systems.

Linkage of Multi-camera/Multi-angle Crop Frames

A multiple of 8K Multi Purpose Camera units or AW-UE150W/K PTZ Cameras (maximum of 8 units) can be connected and operated as one integrated system. Pan, tilt and zoom can be controlled together by setting one cropped area in the main frame and linking it to other cropped areas. This improves operational efficiency in multi-camera/multi-angle recording or broadcasting.

Compact, Lightweight Multi-Purpose Camera

The AK-SHB800GJ 8K multipurpose camera is a box type equipped with an 8K full size CMOS image sensor. The compact size and light weight reduces installation, relocation, and transportation costs. The box-type camera offers a high degree of installation flexibility. Thus, in halls and arenas, it does not take up audience seats with the setup of multiple cameras.



▲ Application Example of the 8K ROI Camera System (3 Cameras, Basketball Game Broadcasting)

When three 8K Multi Purpose Camera units are set up and two cropped areas, close-up and long shot, are linked, the pan, tilt and zoom on all six crops operate together with the operations performed on the main frame image.



Automatic Real-time Correction of Wide-angle Distortion

This function automatically corrects, in real time, wide-angle distortion of images cropped from the image periphery away from the center image. This results in natural-looking videos as if the camera images were individually panned or tilted.



A wide-angle image captured by the 8K Multi Purpose Camera



Image without correction:
Distortion visible in an image cropped from the periphery



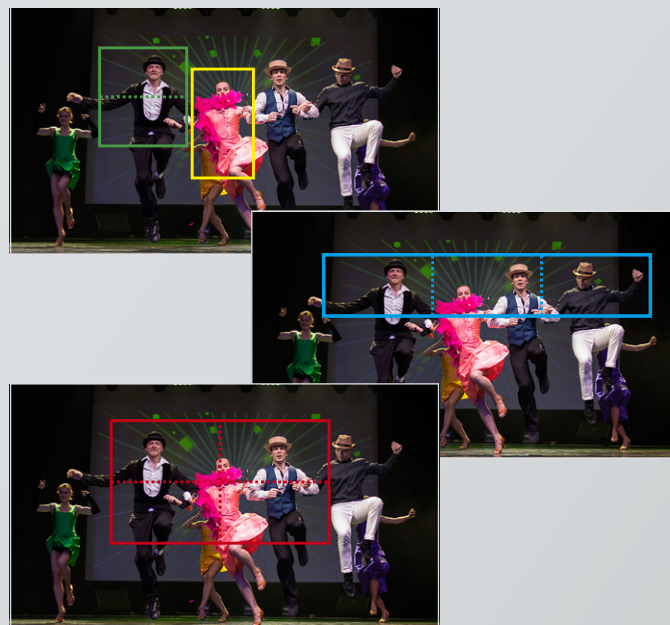
Image after correction:
Distortion automatically corrected

▲ Sample images after automatic wide-angle distortion

* The pictures are sample images for explaining functions.

Portrait, Horizontal Linking, Vertical Linking and 4-frame Cross-linking (4K) Cropping Frame Variations

It is possible to cutout images with portraits (vertical) for displaying onto a vertical display like a smartphone, horizontal linking of multiple frames, vertical linking and 4-frame cross-linking (4K) as cutout variations.



▲ Examples of cropped frames

Portrait (yellow), vertical linking (green), horizontal linking (blue) and 4-frame cross-linking (red).

Preset Memory, Tracing Memory Function

Tracing memory function that records and reproduces the position, size and movement of the cropped frame. Save up to 100 memories per cropped frame.

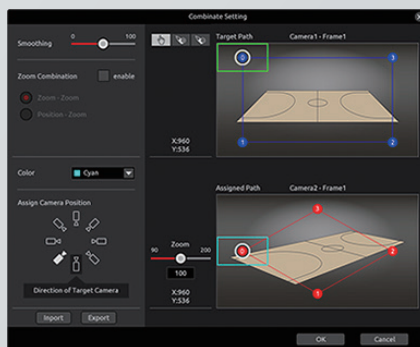
SOFTWARE

As of April, 2022

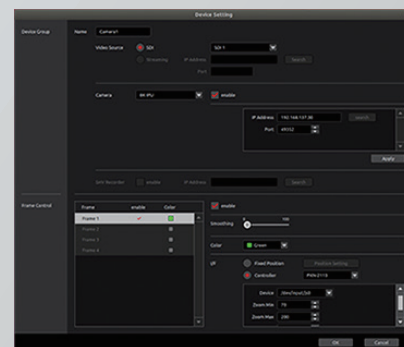
AK-SFC101

Framing Control Software (Software Key)

A software key that activates the framing control software for the 8K ROI Camera System. The software is easy to use with a clear GUI and joystick controller to control the pan, tilt, and zoom of the cropped areas, as well as the selection and interlocking of cameras.



Screen for detailed setting of linking frames



Screen for setting connected devices

OPTIONAL ACCESSORIES

As of April, 2022

AK-HRP1010GJ

Remote Operation Panel (ROP)

The compact operation panel support 8K Multi-Purpose Camera and able to control image quality adjustment remotely. Also, it support PoE and IP control. 8.9 cm (3.5 inches) (VGA)



*Power over Ethernet *Software must be updated when used with the AK-SHB800 8K Multi-Purpose Camera. Once it is updated, it cannot be used except with the 8K Multi-Purpose Camera.

AW-RP150GJ

Remote Camera Controller

It allows to pan, tilt or zoom using the joystick operation while selecting cutout frame of the 8K ROI camera system and checking the angle of view on the LCD monitor.

*Compatible with the pan, tilt and zoom operation of the cutout frames, preset memory operation and LCD display of the status. Functions other than the above will not run.

*Power supply not included. An AC adaptor or PoE+ HUB is required.



Available USB Joystick that is on the market



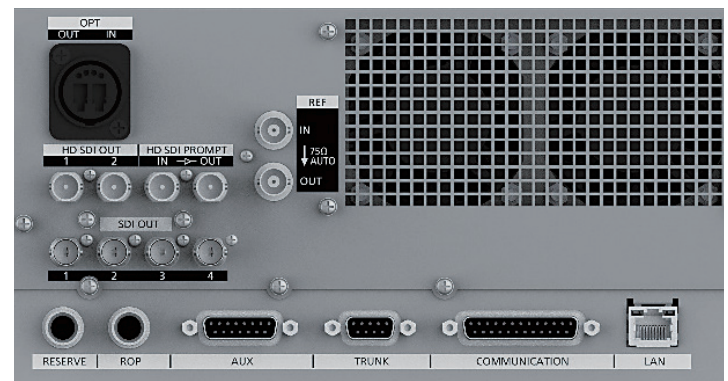
Main supported operations: pan, tilt, zoom and selected cropped area
Joystick/button-assigned operations: X axis: Pan, Y axis: Tilt, possible to operate pan/tilt speed setting, zoom, selected cropped area
*These features are supported with Direct Input type of USB joystick. If a joystick is switchable between X input and Direct Input, chose Direct Input mode..

AK-SHB800GJ/AK-SHB800PSJ 8K Multi Purpose Camera

Power:	DC 12 V (DC 11 V – 17 V)
Power Consumption:	33 W
Weight:	Approx. 4.0 kg (8.82 lbs.) body only
Dimensions:	W 180 mm x H 190 mm x D 177 mm (7-3/32 inches x 7-1/2 inches x 6-21/32 inches) excluding protrusions
Lens Mount:	EF
ND filter:	CLEAR, 1/4, 1/16, 1/64
Pickup Device:	Full Size, CMOS x 1
Sensitivity:	[59.94Hz]: NORMAL: F6, HIGH SENS: F10 (2000lx, 3200K, 89.9% reflection) [50Hz]: NORMAL: F6.5, HIGH SENS: F11 (2000lx, 3200K, 89.9% reflection)
S/N:	60 dB (standard) (DNR ON)
Horizontal Resolution:	HD: 1000 TV lines or above (center) 4K: 2000 TV lines or above (center) 8K: 3600 TV lines or above (center)
Gain:	-6 dB, -3 dB, 0 dB, 3 dB, 6 dB, 9 dB, 12 dB, 15 dB, 18 dB, 21 dB, 24 dB
Total Gain:	Selectable from 6 dB, 12 dB
Shutter Speed:	[59.94Hz]: 1/100 sec, 1/120 sec, 1/125 sec, 1/250 sec, 1/500 sec, 1/1000 sec, 1/1500 sec, 1/2000 sec [50Hz]: 1/60 sec, 1/100 sec, 1/125 sec, 1/250 sec, 1/500 sec, 1/1000 sec, 1/1500 sec, 1/2000 sec
Synchro Shutter Speed:	[59.94Hz]: 1/61.7 to 1/6429 seconds [50Hz]: 1/51.5 to 1/6429 seconds

AK-SHU800EJ/AK-SHU800PSJ Image Processing Unit

Power:	AC100 V– 240 V, 50 Hz/60 Hz
Power Consumption:	250 W
Weight:	Approx. 12.0 kg (26.4 lbs.) (body only)
Dimensions:	W 424 mm x H 130 mm x D 401 mm (16-11/16 inches x 5-1/8 inches x 6-21/32 inches) (excluding protrusions)
Output Format:	8K (7680 x 4320): 59.94p, 50p (12G x 4) 4K (3840 x 2160): 59.94p, 50p (12G, 3G x 4) HD (1920 x 1080): 59.94p, 50p (3G), 59.94i, 50i (1.5G)
Function:	ROI, HDR (HLG), BT.2020 compatible



AK-SHU800EJ Rear Terminal

Panasonic®

Panasonic Connect Co., Ltd.
2-15 Matsuba-cho, Kadoma, Osaka 571-8503 Japan



Factories of Panasonic Connect Co., Ltd. have received ISO14001:2015-the Environmental Management System certification. (Except for 3rd party's peripherals.)



For more information, please visit Panasonic web site
<https://pro-av.panasonic.net/en/qr/>



Broadcast and Professional AV Website



Contact Information



Facebook



Mobile App