

# Guide for AG-CX350 clip import on (Win) EDIUS9 Ver. 9.002903

1/3

The screenshot displays the EDIUS 9.002903 interface. The main window is divided into several panels:

- Top Left:** A large empty area for previewing clips. Two blue callout boxes labeled "AVCHD" and "MOV" have red arrows pointing to the corresponding folders in the file browser.
- Top Right:** A file browser window showing the contents of a removable media device. It highlights the "AVCHD" folder (labeled "Import from SD card") and the "Mync" folder (labeled "Import from Mync").
- Bottom Left:** The "Sequence1" timeline and track panel, showing video (V), audio (A), and title (T) tracks.
- Bottom Right:** The "Audio Mixer (Peak Meter)" panel, showing levels for four audio channels (1 VA, 1 A, 2 A, 3 A) and a Master channel.

The Windows taskbar at the bottom shows the system clock as 11:28 AM on 1/11/2018.

# Guide for AG-CX350 clip import on (Win) EDIUS9 Ver. 9.002903

2/3

EDIUS File Edit View Clip Marker Mode Capture Render Tools Settings Help - Evaluation -

PLR REC

FOLDER Mync/Catalogs/EVA1 (1/1)

Clip Name	Type	Duration	Video stream type	S	File Size	4096
A112C001_180111_J703					561 MB	4096

Right-click on clips and select "Add to Bin" or "Add and Transfer to Bin".

Source Browser

Audio Mixer (Peak Meter)

1 VA 1 A 2 A 3 A  
C C C C  
L R L R L R L R  
0.0 0.0 0.0 0.0  
+12 +12  
+6 +6  
0 0  
-6 -6  
-12 -12  
-18 -18  
-36 -36  
-60 -60  
Off Off Off Off  
Off Off

Master

Information

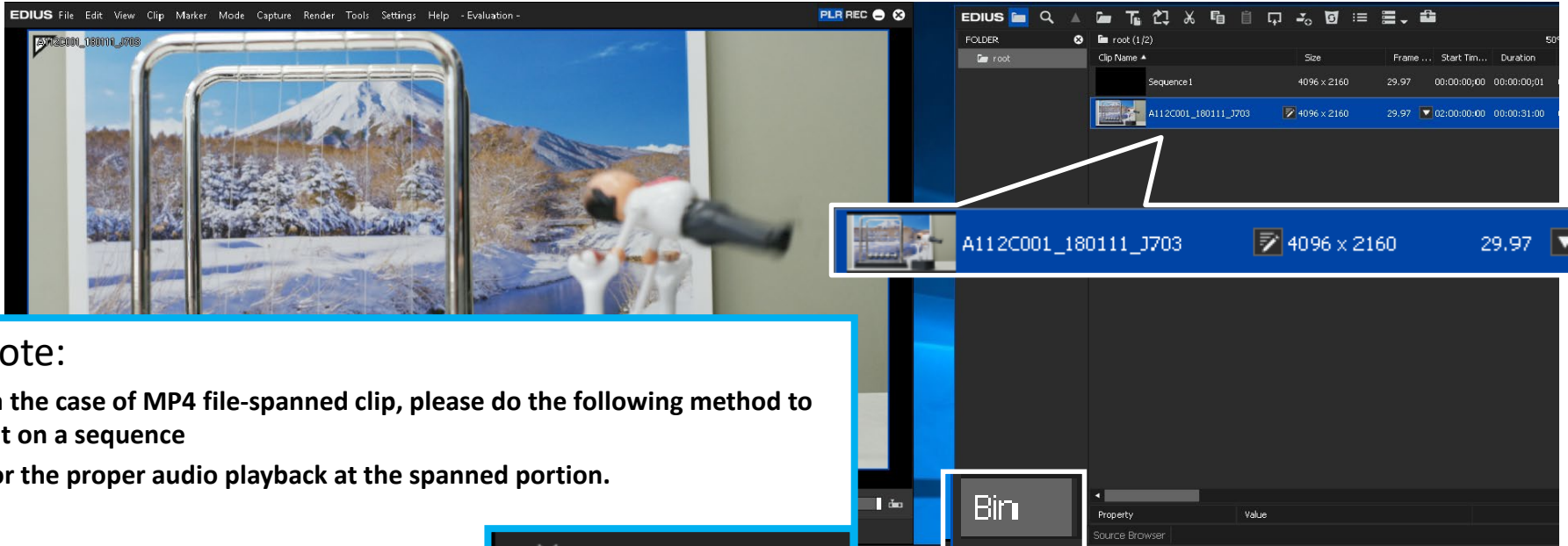
Pause Insert Mode Ripple On Disk: 70% is being used (F:)

1:03 PM 1/11/2018

# Guide for AG-CX350 clip import on (Win) EDIUS9 Ver. 9.002903

3/3

Import complete



## Note:

- In the case of MP4 file-spanned clip, please do the following method to put on a sequence
- for the proper audio playback at the spanned portion.

- 1) Line clips in order of playback the bin.
- 2) Select all the clips.
- 3) Right-click and do "Set as Sequence".
- 4) Clips are unified

