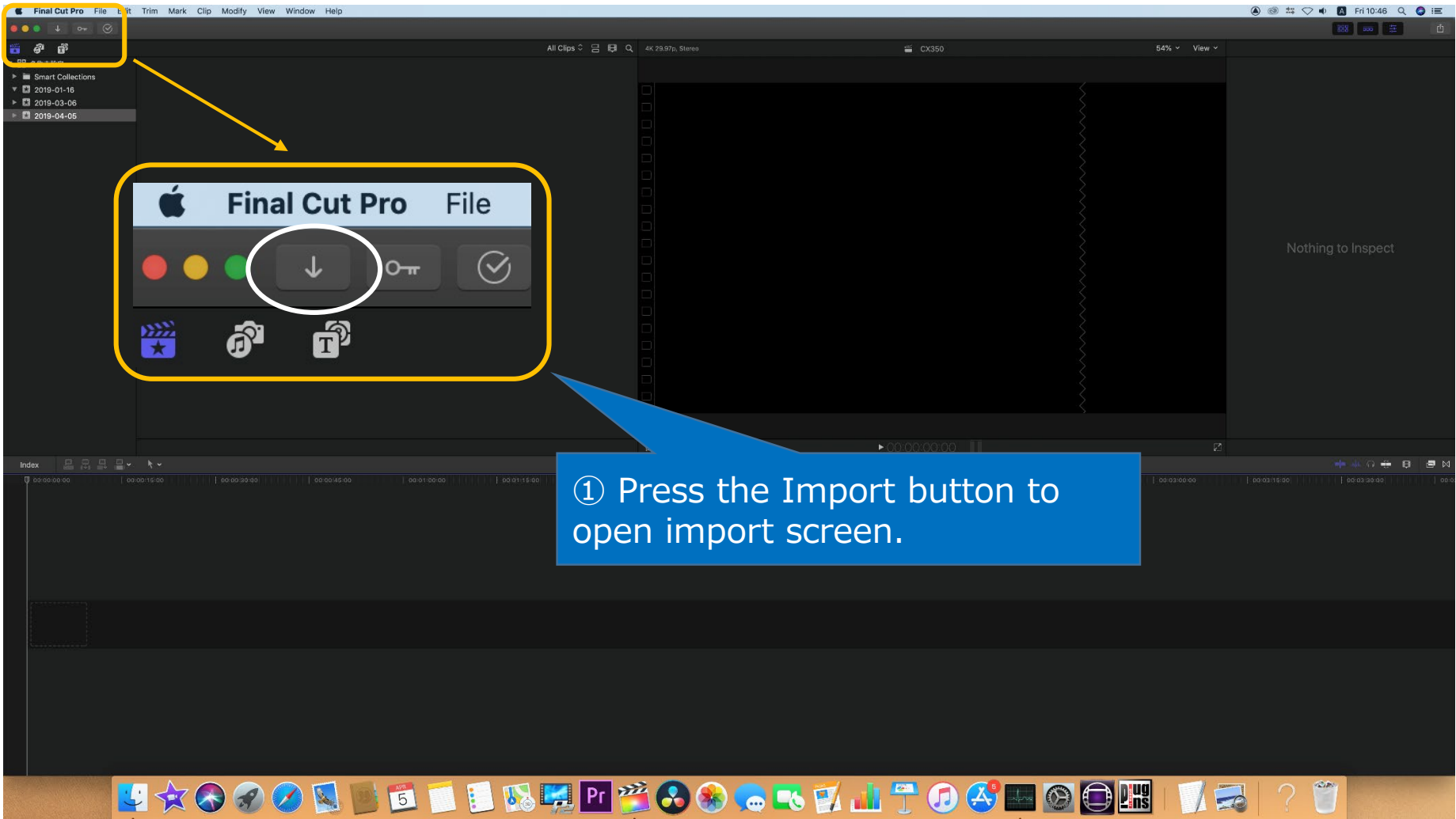


Guide for AG-CX350 clip import from SD,P2 card on (Mac) Final Cut Pro X Ver.10.4



① Press the Import button to open import screen.

Guide for AG-CX350 clip import from SD,P2 card on (Mac) Final Cut Pro X Ver.10.4

The screenshot shows the 'Media Import' window in Final Cut Pro X. The interface is dark-themed. On the left, the 'GAMERNAS' library is selected, and the 'A004' event is chosen. The 'DEVICES' list shows 'Macintosh HD'. The 'FAVORITES' list includes 'alliance' and 'Desktop'. The main area displays a table of clips. The 'Clip #1' row is highlighted, showing details for 'A004C001J90404_B90C'. The right sidebar contains various import options, including 'Add to existing event', 'Files', 'Keywords', 'Audio Roles', 'Encoding', and 'Analyze and Fix'. The 'Close window after starting import' checkbox is checked. The 'Import All' button is highlighted in yellow.

② Select SD or P2 card.

Clip #1	Resolution	Frame Rate	Start Time	End Time	Duration	Date
A004C001J90404_B90C	1920 x 1080	59.94	02:00:00:00	02:00:08:00	00:00:08:00	Apr 4, 2019 9:52:07
	3840 x 2160	29.97	01:00:00:00	01:00:10:15	00:00:10:15	Apr 4, 2019 9:50:28

③ Select any clips displayed in the screen to import.

④ Click Import All button.

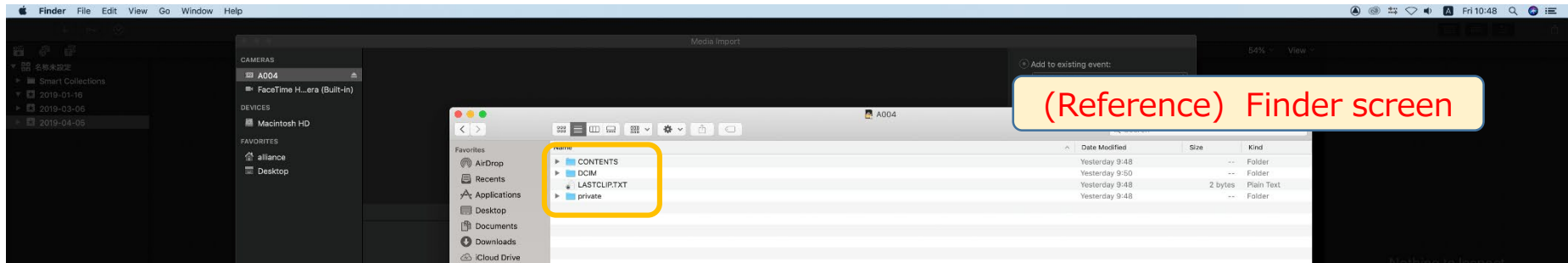
Close window after starting import

Stop Import Import All

Close window after starting import

Stop Import Import All

Guide for AG-CX350 clip import from SD,P2 card on (Mac) Final Cut Pro X Ver.10.4



<Workaround when FCPX does not recognize the MOV or AVCHD file>

AVCHD or MOV files might not be recognized due to P2 CONTENTS folder.

- ① In case of import from SD card:
Mount SD card first, then restart Final Cut Pro X.
- ② In case of HDD :
 1. Restart Final Cut Pro X.
 2. If it's still not recognized after restarting Final Cut Pro X,
please separate CONTENTS folder from others.

