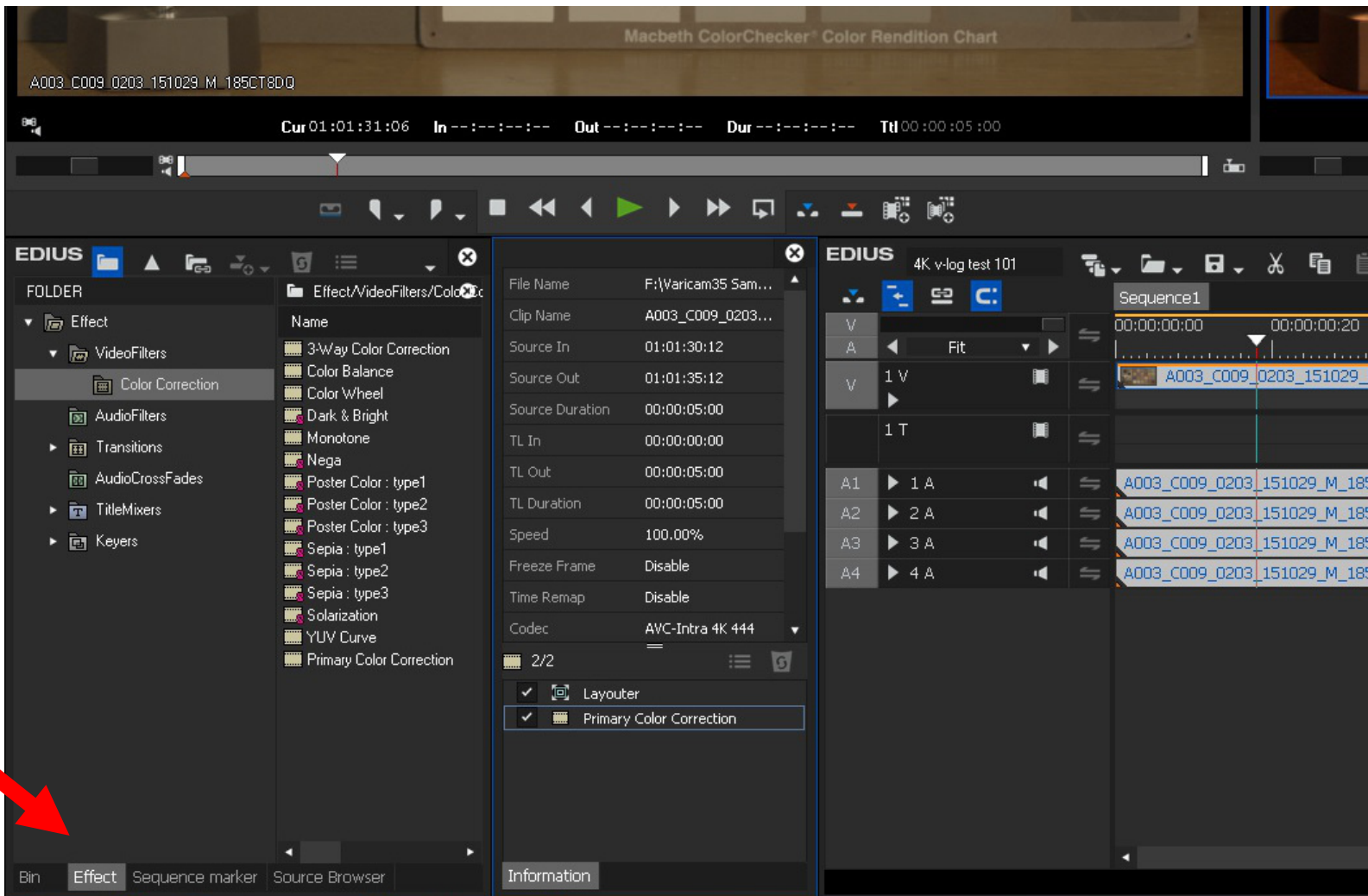


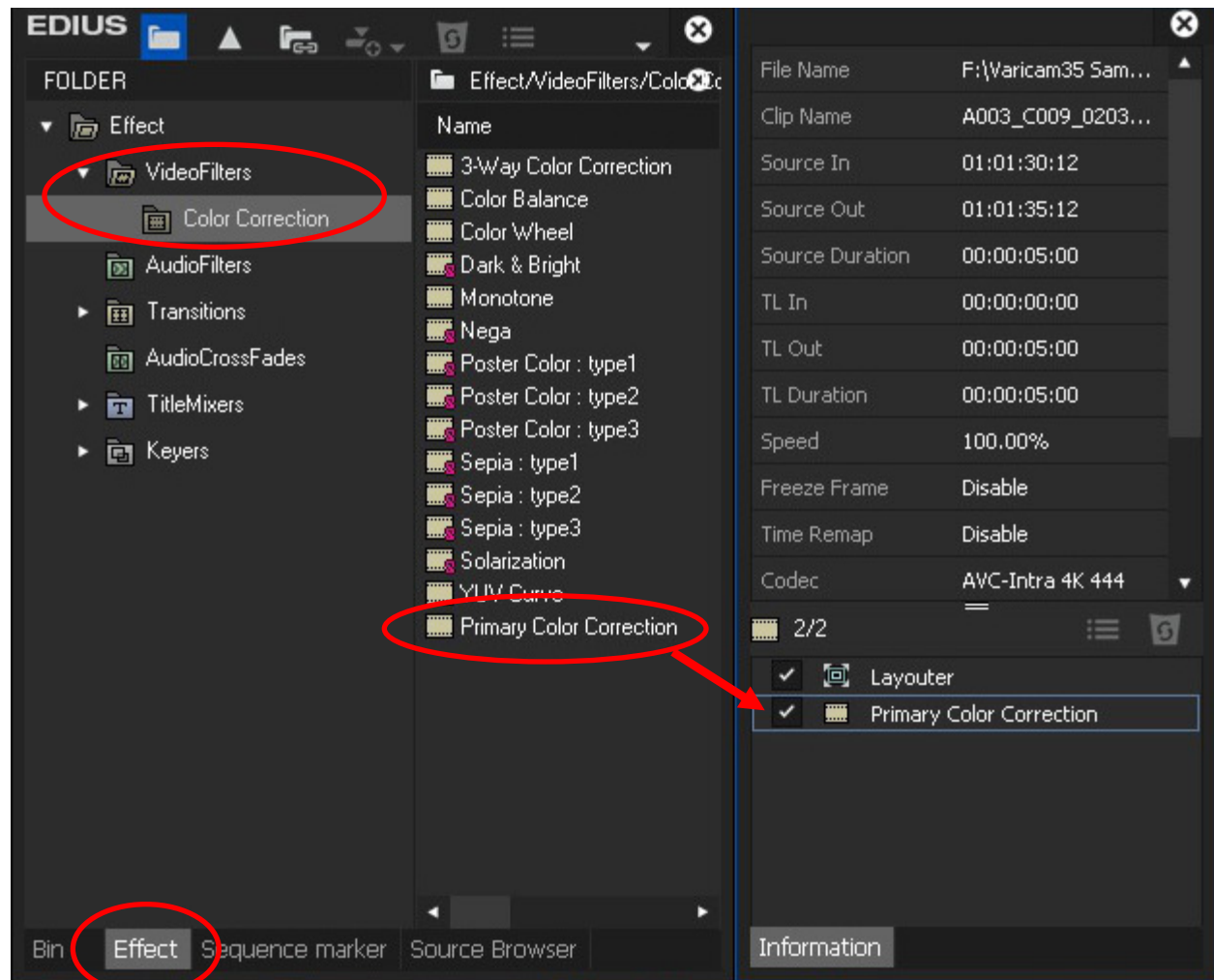
Guide to convert DVX200 V-Log L clip to 709 on Grass Valley EDIUS 8.22

1) Select clip on a timeline, and open [Effect] tab.



Guide to convert DVX200 V-Log L clip to 709 on Grass Valley EDIUS 8.22

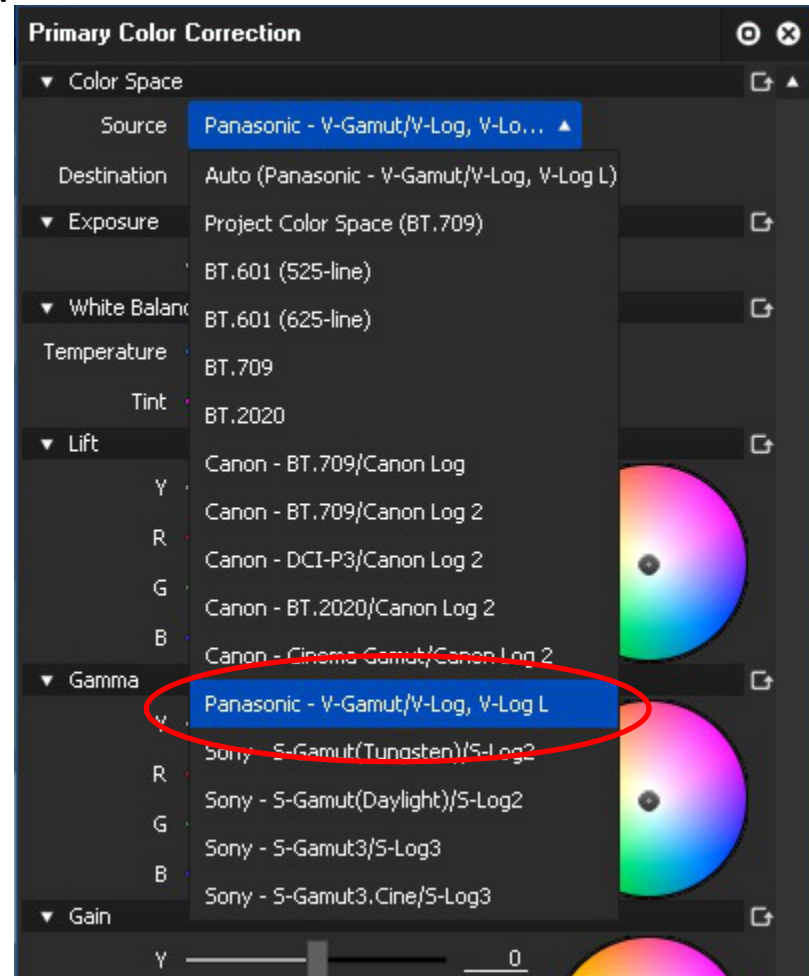
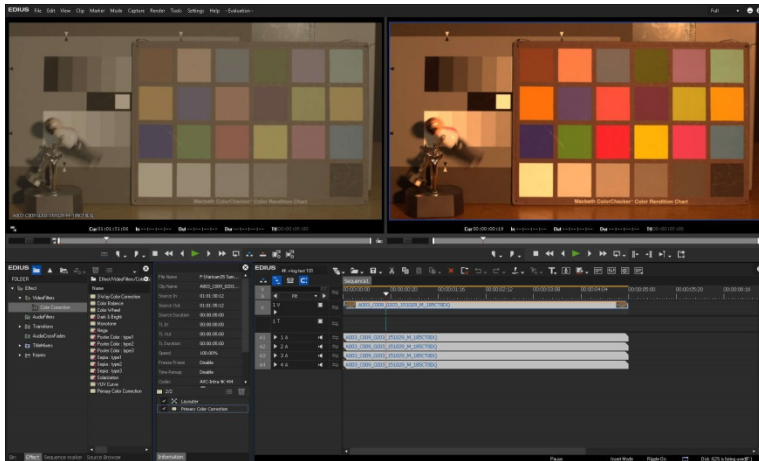
2) Select [Video Filters] > [Color Correction] > [Primary Color Correction] on [Effect] tab, and then drop it into [Information] field.



Guide to convert DVX200 V-Log L clip to 709 on Grass Valley EDIUS 8.22

- 3) Double click [Primary Color Correction] to open a window.
- 4) Select [Panasonic – V-Gamut/V-Log, V-Log L] from the list of [Color Space] > [Source]
- 5) Make sure if the clip is converted to 709.

Note: This V-Log to 709 conversion function is supported by EDIUS 8.20 and later version.



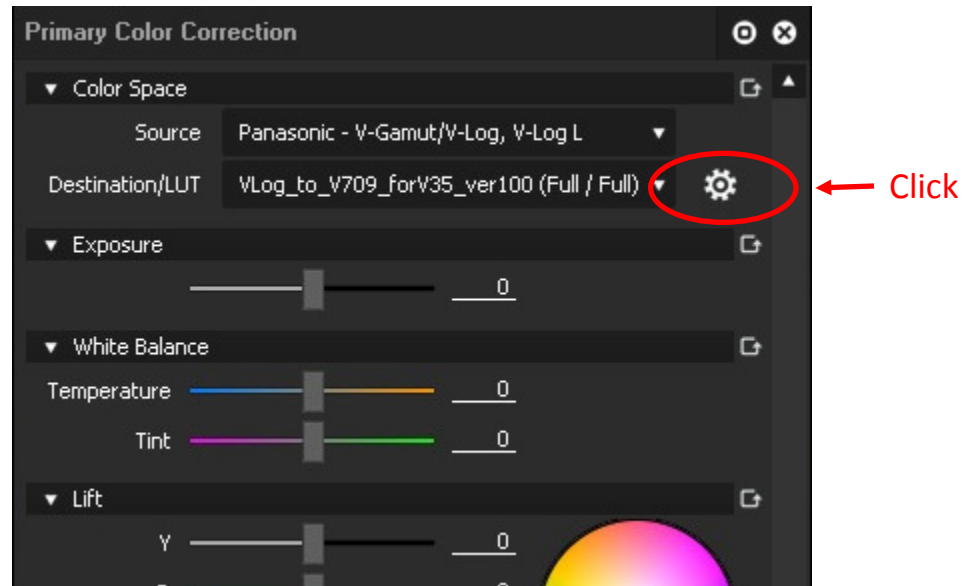
Guide to convert DVX200 V-Log L clip to 709 on Grass Valley EDIUS 8.22

In the case of application of Panasonic 3D LUT .cube file:

1) Download “VARICAM 35 3DLUT V-Log to V-709 (Ver.1.00)” file from the following URL and unzip it.

<http://pro-av.panasonic.net/jp/varicam/35/dl.html>

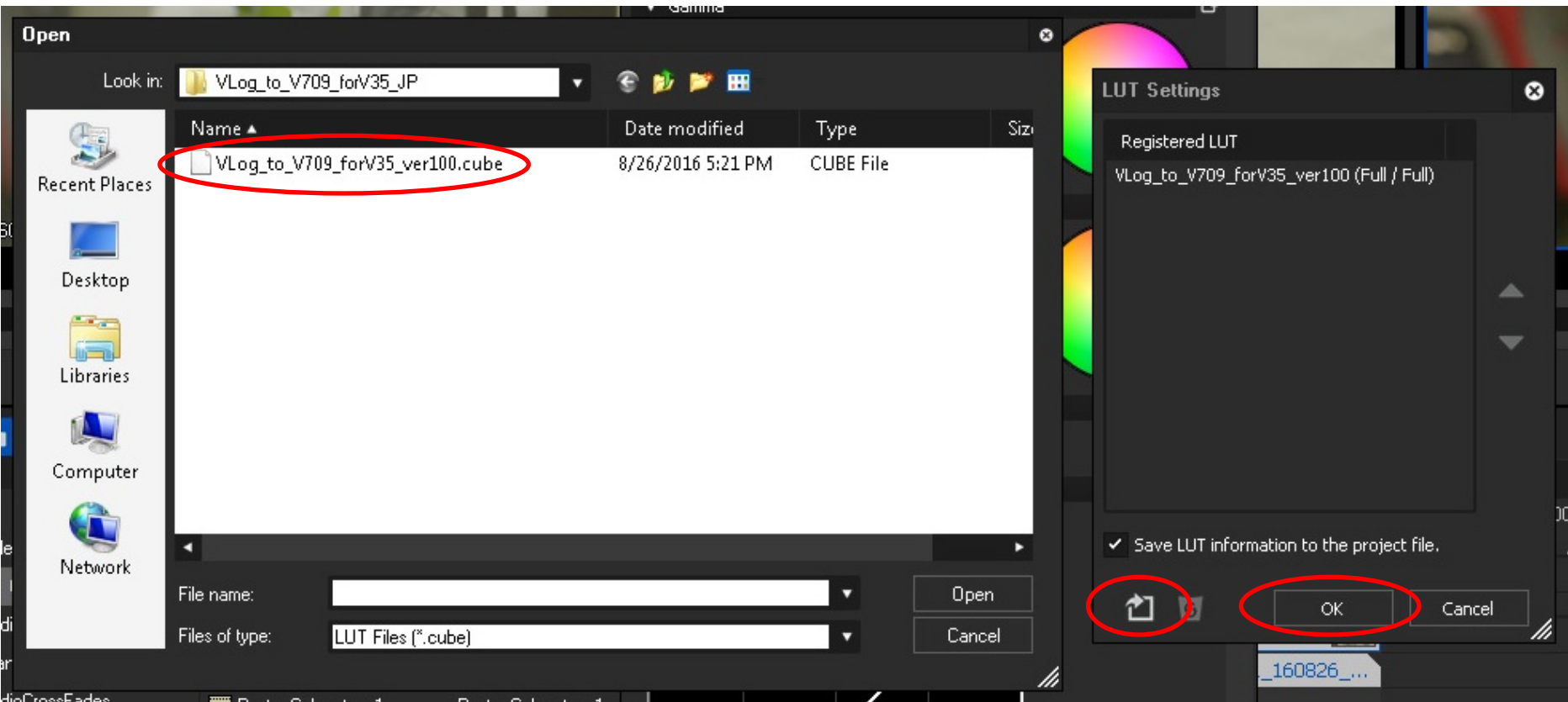
2) Click the icon next to [Destination/LUT] of [Color Space].



Note: This 3D LUT cube file application function is supported by EDIUS 8.22 and later version.

Guide to convert DVX200 V-Log L clip to 709 on Grass Valley EDIUS 8.22

3) Click icon and select the "VLog_to_V709_forV35_ver100.cube" file then click OK.



Guide to convert DVX200 V-Log L clip to 709 on Grass Valley EDIUS 8.22

- 4) Select the registered LUT .cube file from
[Color Space] > [Destination/LUT]
- 5) Confirm that the clip is converted to V-709.

