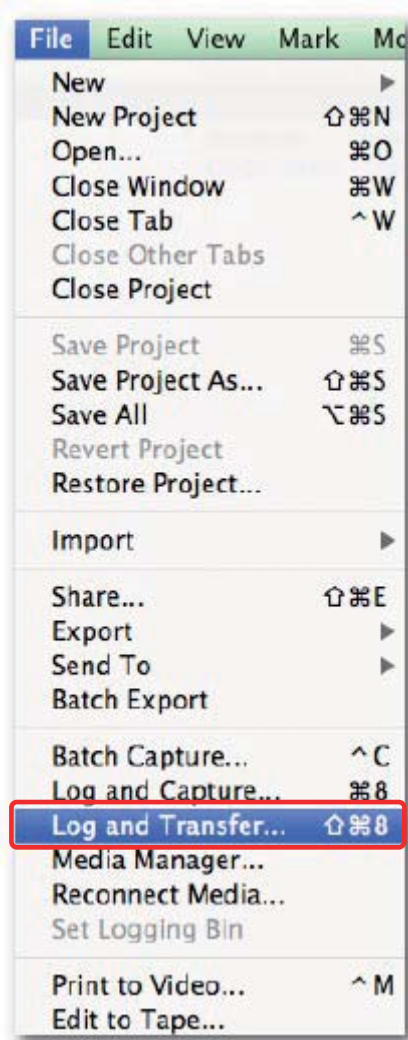


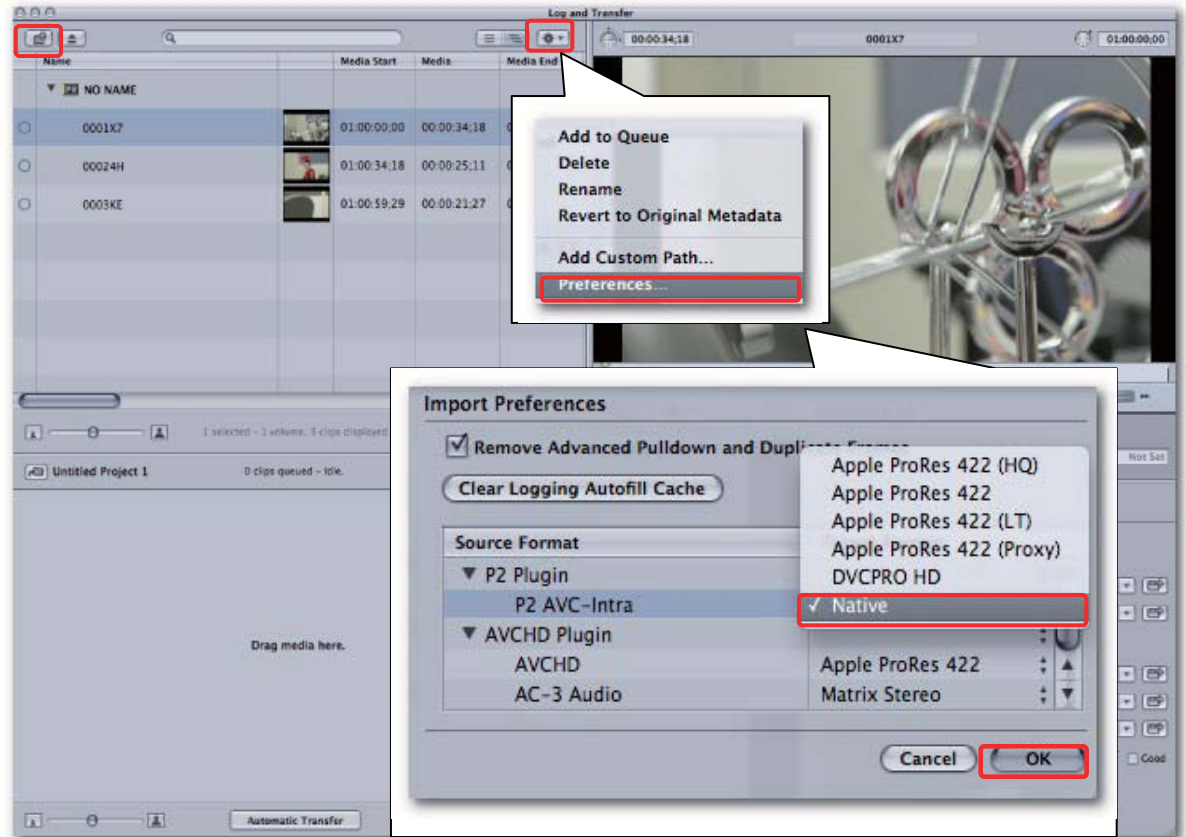
Import P2 clips from a P2 card on Final Cut Pro 7.

1. Click “Log and Transfer...”



2. Confirm import settings.

Click icon  to open Import Preference menu.



Select Native for AVC-Intra as “Target Format”, and click OK.

Note: When importing copied P2 contents on hard disk drive, click icon  to select the target path.

3. Select desired clips and click “Add Selection to Queue”, or drag them into the queue to import.

