

Guide for AU-EVA1 clip import on (Win) EDIUS9 Ver. 9.002903

1/3

The screenshot displays the EDIUS 9.002903 interface. The main window is divided into several panels:

- Top Left:** A large empty area for preview or editing. Below it, a timeline shows the current timecode as 00:00:00:00.
- Top Right:** A file browser window showing the contents of a folder named "Removable Media\H:[A112]\Video (1/1)". It lists subfolders: "AVCHD" and "Video". A white box highlights the "Video" folder, with a red arrow pointing to it from a blue box labeled "MOV". Another white box highlights the "Mync" folder, with a red arrow pointing to it from a blue box labeled "AVCHD".
- Bottom Left:** A track panel showing a sequence named "Sequence1" with multiple tracks for video (V) and audio (A).
- Bottom Right:** An "Audio Mixer (Peak Meter)" panel with four channels (1 VA, 1 A, 2 A, 3 A) and a "Master" channel. Each channel has a volume knob and a peak meter.

Text overlays on the right side of the screenshot indicate the import sources:

- Import from SD card:** Points to the "Video" folder in the file browser.
- Import from Mync:** Points to the "Mync" folder in the file browser.

Guide for AU-EVA1 clip import on (Win) EDIUS9 Ver. 9.002903

2/3

EDIUS File Edit View Clip Marker Mode Capture Render Tools Settings Help - Evaluation -

PLR REC

Mync/Catalogs/EVA1 (1/1)

Clip Name	Type	Duration	Video stream type	S	File Size	Size
A112C001_180111_J703					561 MB	4096

- Add to Bin
- Add and Transfer to Bin
- Show in Player Enter
- Add to Timeline Shift + Enter
- Properties... Alt + Enter
- Show in Mync

A112C001_180111_J703

- Add to Bin
- Add and Transfer to Bin
- Show in Player Enter
- Add to Timeline Shift + Enter
- Properties... Alt + Enter
- Show in Mync

02:00:00:00

Cur:02:00:00:00 In:02:00:00:00 Out:--:--:--:-- Dur:--:--:--:-- Ttl:00:00:31:00

Source Browser

Right-click on clips and select "Add to Bin" or "Add and Transfer to Bin".

EDIUS Untitled18

Sequence1

1 Second

2 V

1 VA

1 A₁

1 T

1 A

2 A

3 A

4 A

Audio Mixer (Peak Meter)

1 VA 1 A 2 A 3 A

C C C C

L R L R L R L R

0.0 0.0 0.0 0.0

+12 +12

+6 +6

0 0

-6 -6

-12 -12

-18 -18

-36 -36

-60 -60

Off Off Off Off

Master

0.0 0.0

Off Off

Information

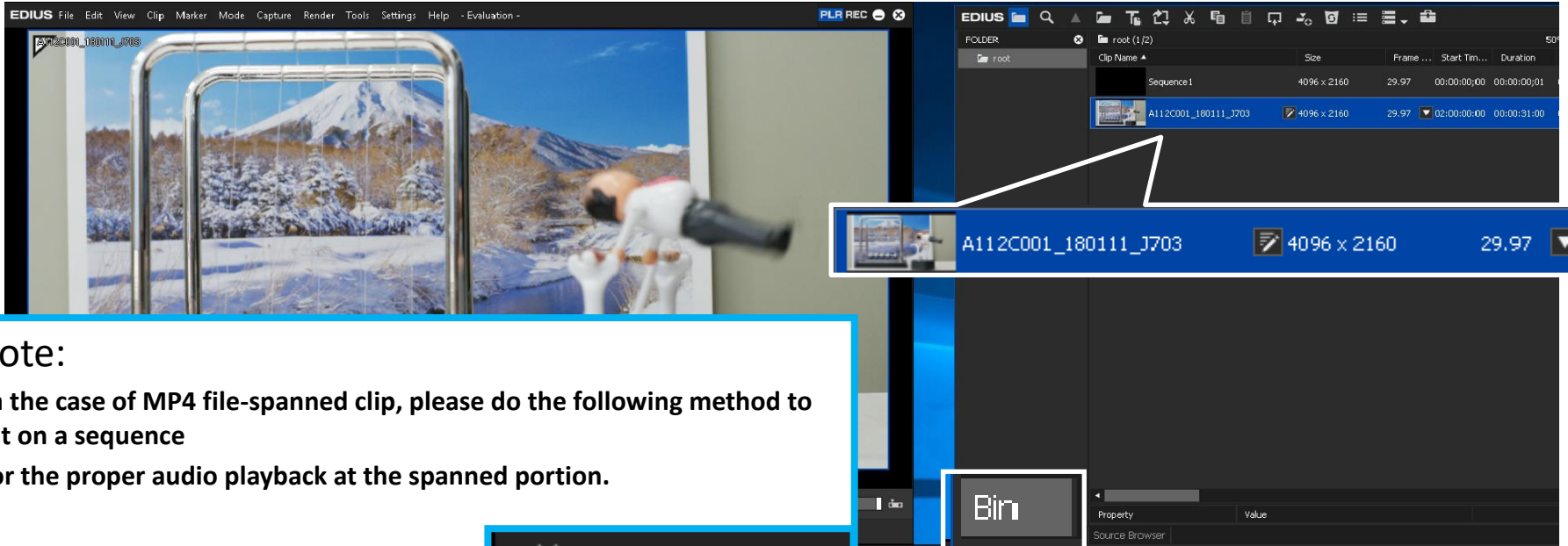
Pause Insert Mode Ripple On Disk: 70% is being used(F:)

1:03 PM 1/11/2018

Guide for AU-EVA1 clip import on (Win) EDIUS9 Ver. 9.002903

3/3

Import complete



Note:

- In the case of MP4 file-spanned clip, please do the following method to put on a sequence
- for the proper audio playback at the spanned portion.

- 1) Line clips in order of playback the bin.
- 2) Select all the clips.
- 3) Right-click and do "Set as Sequence".
- 4) Clips are unified

