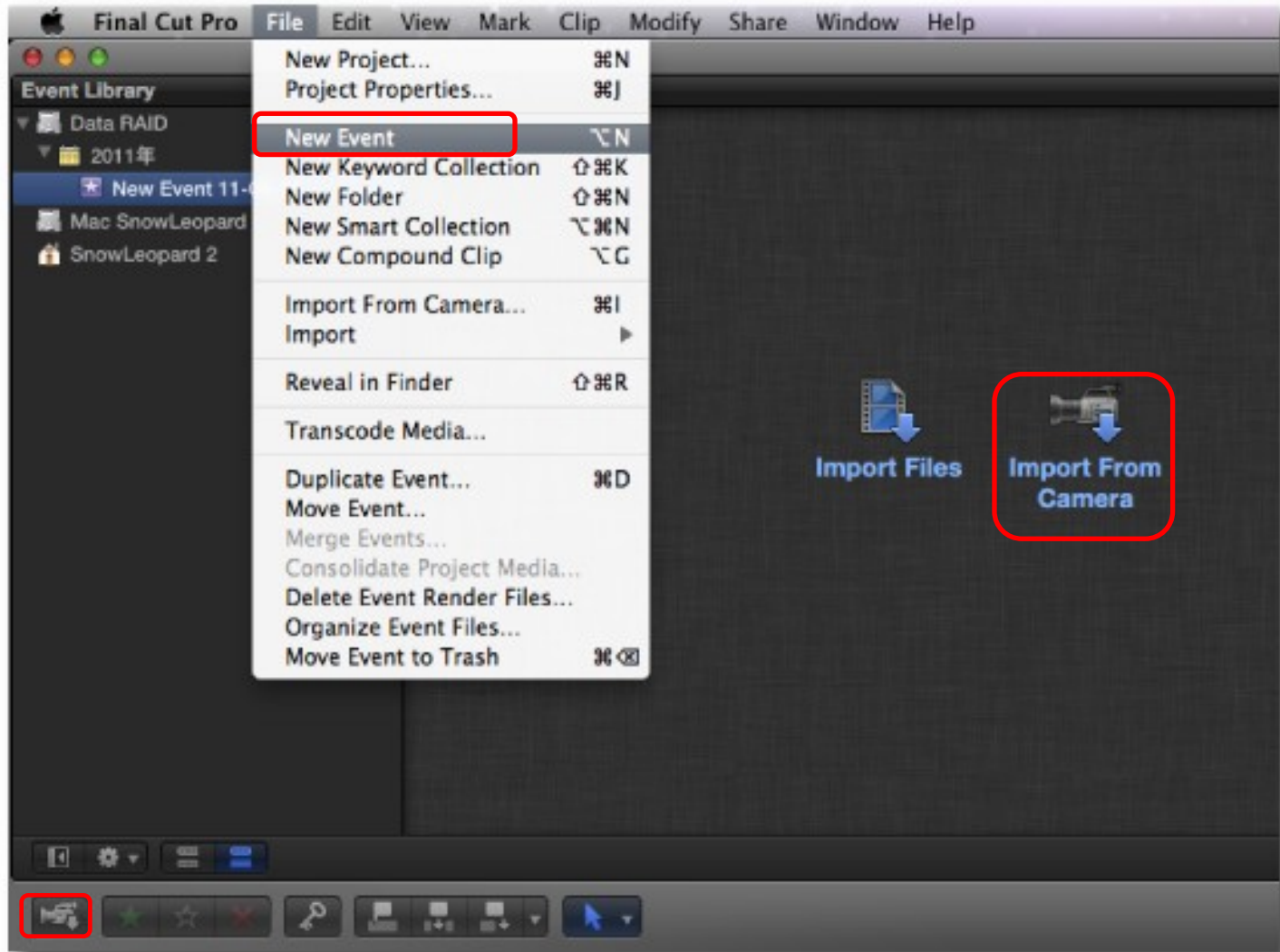


# Import clips (when a device is connected to a Mac.)

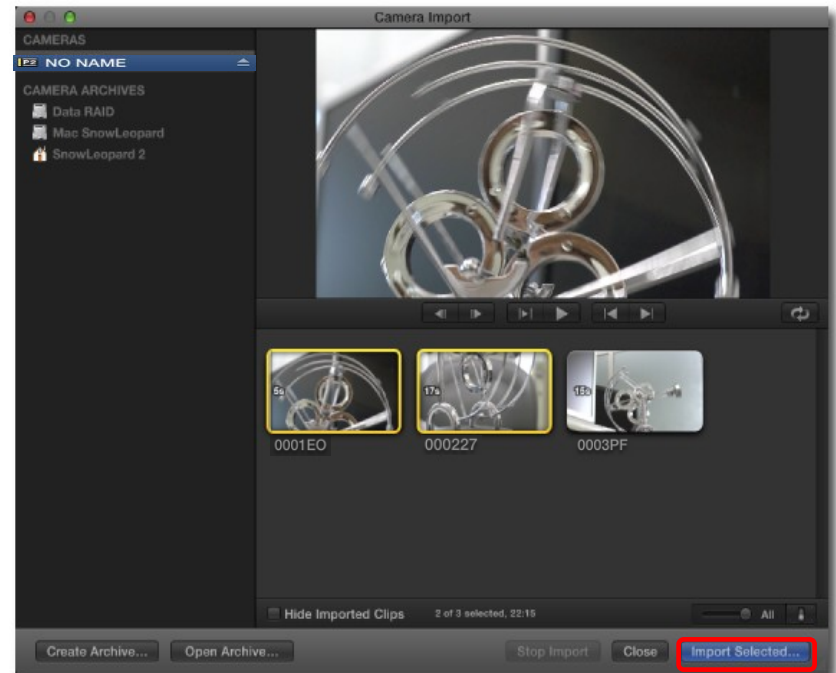
1. Click one of the three portions surrounded by  displayed below to open import window.



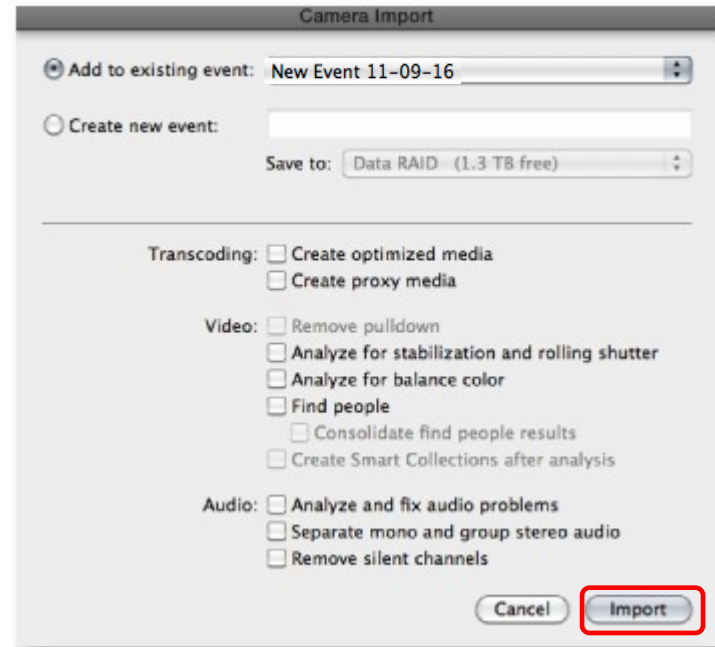
2. Select desired clips, and click “Import Selected...”.

Note:

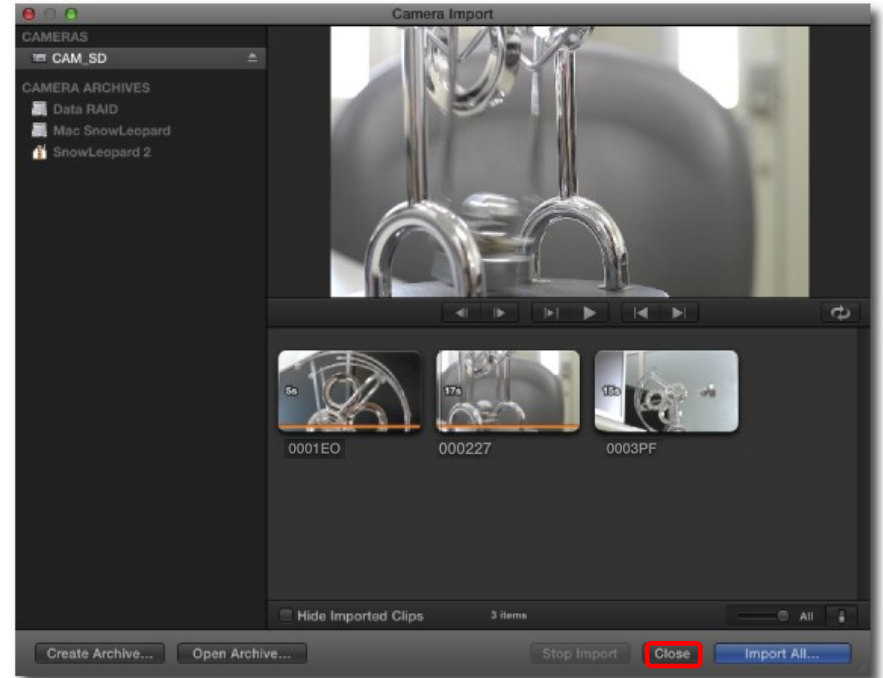
In the case of copied P2 folder (e.g. in a hard disk drive), click “Open Archive...” to select the target path to import.



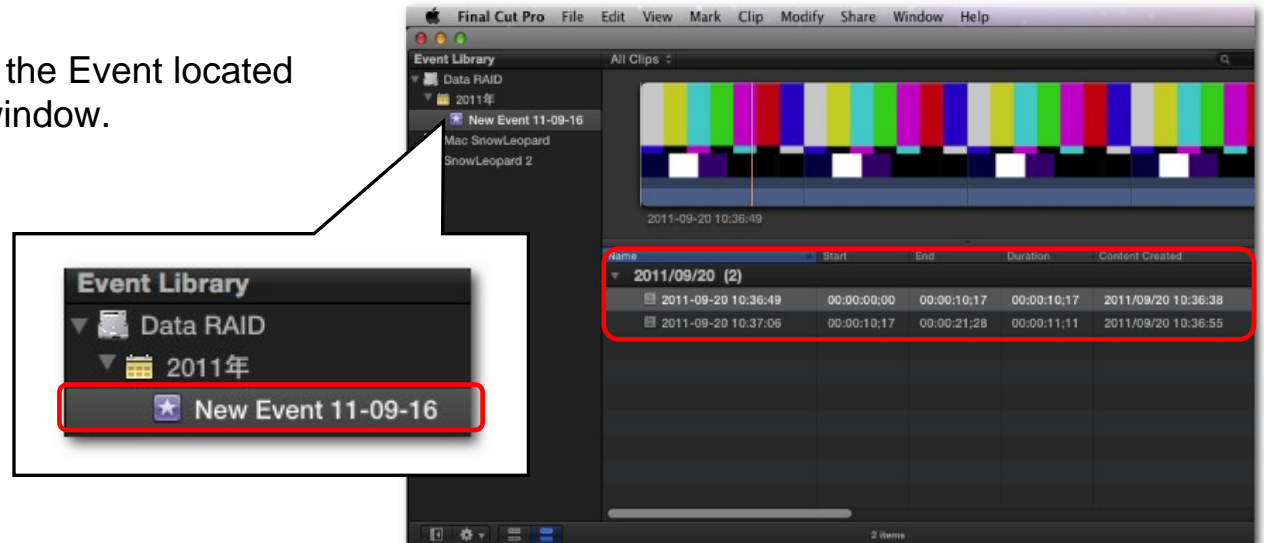
3. On import setup menu, input event name. Check Transcoding, Video and Audio, if necessary. Click “Import”.



4. Close the import window when it's completed.  
Note that the orange line appears on the thumbnail of the imported clip.

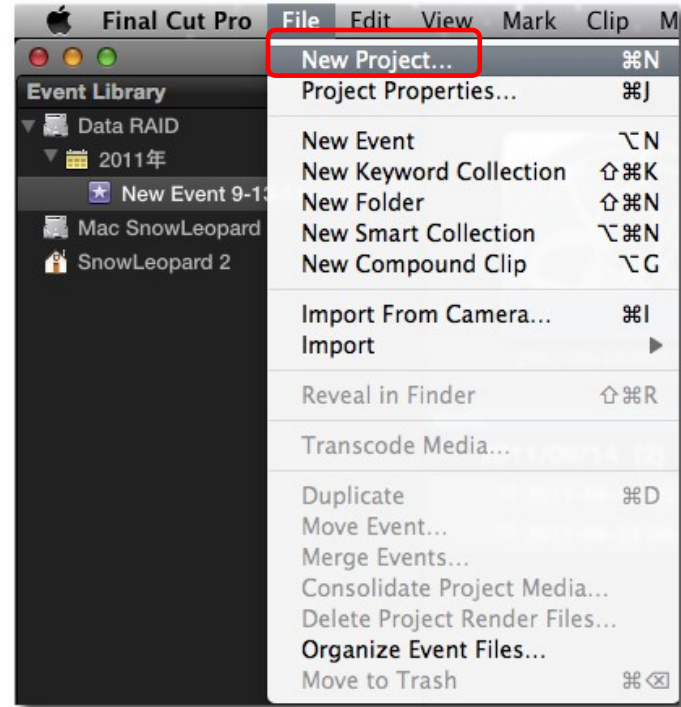


5. Now the clips are imported in the Event located on the upper left side of the window.



## Create a new project.

6. Click “New Project...” from File menu.



7. On the project menu, set each items.  
Automatic setup is possible for “Video Properties”  
and “Timecode Display”.  
Click “OK” to create a new project.

